

EN



VIBdaq 16.1

USER MANUAL

EC SYSTEMS

Table of content

1. Introduction.....	4
2. VIBdaq 16.1 module technical data	5
3. VIBdaq 16.1 module description	6
4. Installation.....	7
4.1 Drivers and software installation	7
4.2 Plug VIBdaq 16.1 card to computer.....	8
5. Run VIBdaq 16.1 card in DASYSLab®	12
5.1 Install the drivers in the DASYSLab®	12
5.2 Starting VIBdaq 16.1 card in DASYSLab®	13

List of images

Figure 3.1 » VIBdaq 16.1 module description	6
Figure 4.1 » The main window of installer	7
Figure 4.2 » Documentation selection window	8
Figure 4.3 » Adding the module in the InstaCal program	10
Figure 4.4 » First module of VIBdaq 16.1 card installed in InstaCal program.....	11
Figure 4.5 » InstaCal window - two modules installed in the system.....	11
Figure 4.6 » Board configuration window.....	12
Figure 5.1 Configurator 12.0 program's window	13
Figure 5.2 » Browser window. Analog input module selected	14
Figure 5.3 » Module selection window	14
Figure 5.4 » The properties window of input module	16
Figure 5.5 » Hardware Setup window.....	18

Figure 5.6 » Measurment Setup window	18
Figure 5.7 » Modify Timebase window	19
Figure 5.8 » Timeline chart.....	20

1. Introduction

VIBdaq 16.1 is a universal 16-channel data acquisition module, enabling recording of electrical signals with a sampling frequency up to 100 kHz and a resolution of 16 bit.

Thanks to a very good parameters of use, simple installation and operation, it is ideally suited to calculate various types of measurements.

VIBdaq 16.1 module is equipped with a unique IEPE input circuits allowing the cooperation with a variety of sensors made in standard IEPE, such as microphones, accelerometers, etc. The inputs are equipped with sensor circuits' control systems, signalling the occurrence of breaks or short circuits in the sensor circuit.

Drivers which enable cooperation with the DASyLab[®] and LabVIEW[™] software are supplied with the VIBdaq 16.1 module.

2. VIBdaq 16.1 module technical data

PARAMETER		VALUE
No. of channels		16
Type of inputs		IEPE 2,4 mA 24V
Resolution		16 bit
Sampling		Synchronous, up to 100 kHz/channel, sum of sampling frequency for active channels : max 400 kHz/module
Measurement range		$\pm 10V$, $\pm 5V$, $\pm 2V$ and $\pm 1V$ software selection
Crosstalk		-80 dB (in the band from 0 to 25 kHz)
The maximum absolute error	range $\pm 10V$	6 mV
	range $\pm 5V$	3 mV
	range $\pm 2V$	1,5 mV
	range $\pm 1V$	1 mV
Power supply		5V DC from the USB port of computer, max 400 mA / module; 12V DC external power supply, max 350 mA
Communication		USB 1.1, USB 2.0
Operating temperature		0..+70°C
Dimensions		110 x 200 x 260 mm

3. VIBdaq 16.1 module description

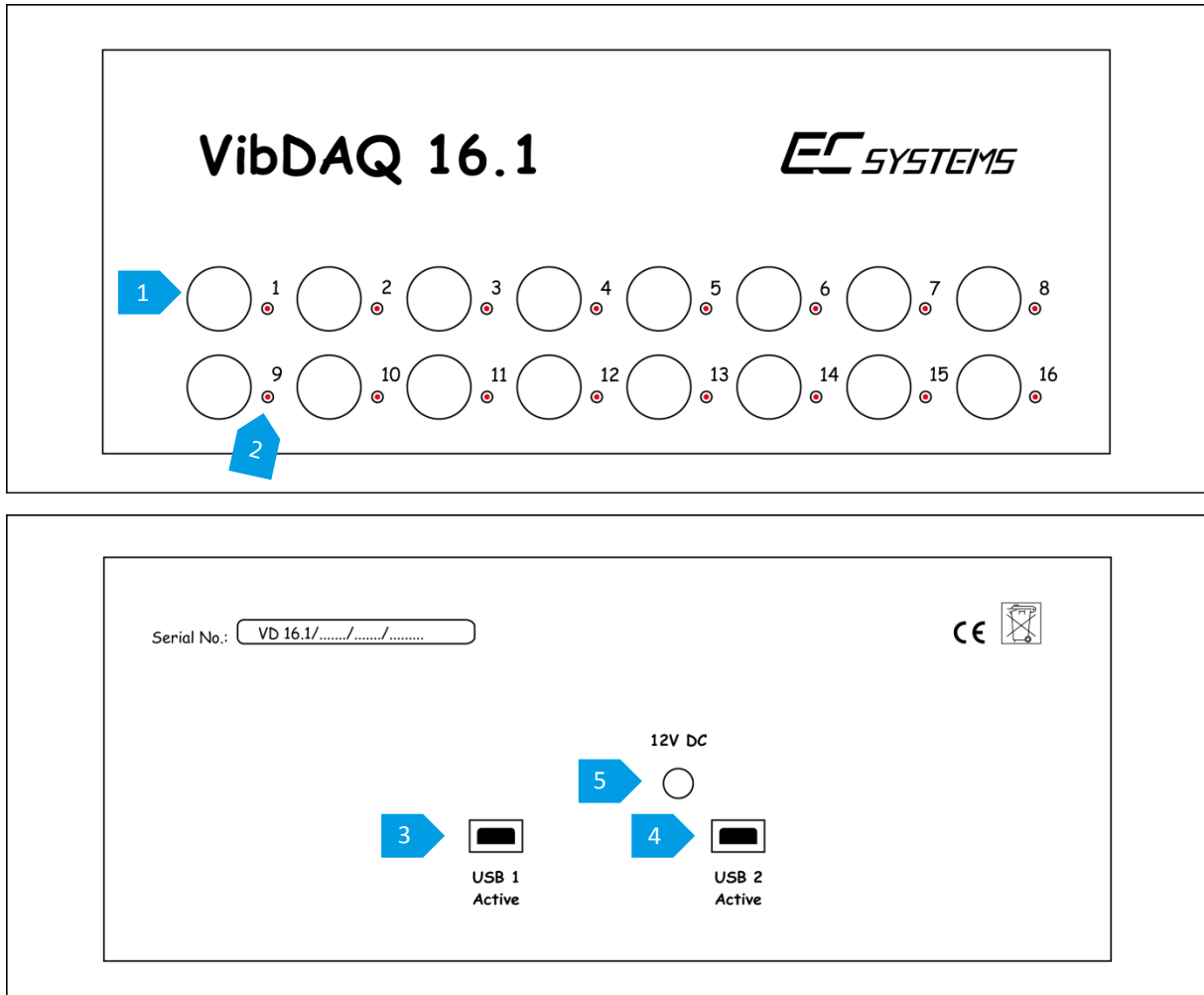


Figure 3.1 » VIBdaq 16.1 module description

- » Input BNC connector,
- » sensor's OPEN / SHORT circuit control LED ,
- » USB1 connector,
- » USB2 connector,
- » Power Connector 12V DC.

4. Installation

4.1 Drivers and software installation

Before connecting the VIBdaq 16.1 card to the computer one need to install the drivers and control software. Insert the CD that came with the device and then run the installation program. The dialog box shown in figure 2 appears during the installation process. In this window one can select the components to install – make sure that *InstaCal & Universal Library* position is checked. Other items are optional and can be deselected. This manual describes the installation process of the default set of software - Figure 4.1.

To start software installation one should click *Install* button, which starts installer program called *InstaCal*. Confirm the default settings at successively appearing windows by clicking the *Next* button, and then *Install* button. After the installation, a window informing about successful installation will appear.

Clicking *Finish* completes the installation program InstaCal.

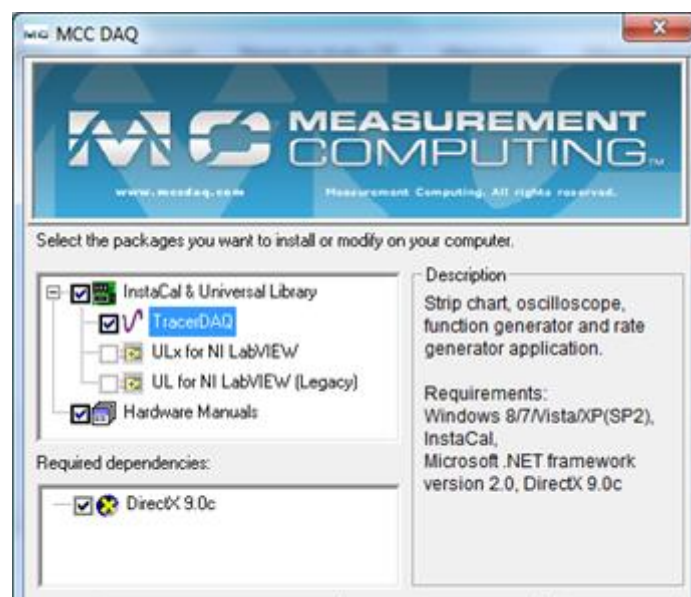


Figure 4.1 » The main window of installer

If in the installing window (Figure 4.1) default position has been selected, the next step is to install the utility *TracerDAQ*. As in the case of the *InstaCal* one should approve a default options by Next and Install buttons. *TracerDAQ* program requires *DirectX 9.0c* libraries to work properly, so after the program installation the *DirectX* installer starts, if the corresponding option was selected in the window of Figure 4.1

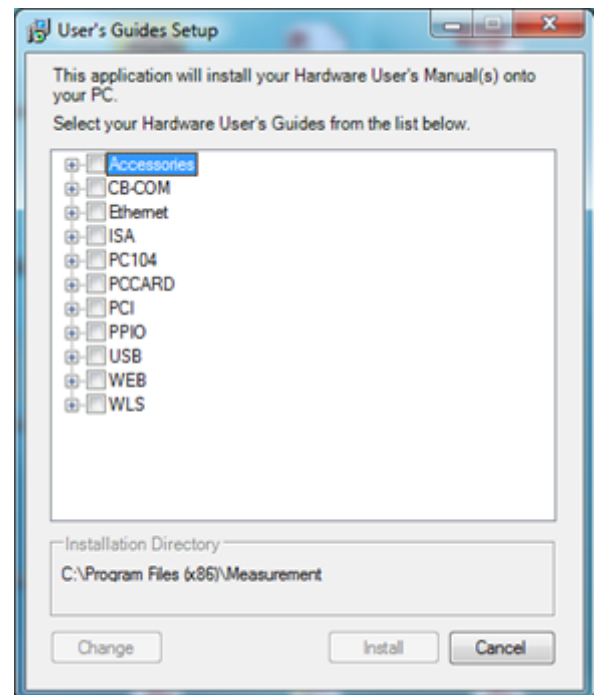


Figure 4.2 » Documentation selection window

The last step is to install documentation - the window shown in Figure 4.2 opens automatically. One must select the appropriate device model: *USB »USB-1608FS-Plus*, and then click *Install*. The window closes automatically after copying the documentation. It is also the end of the software installation. The last window that opens encourage to download a test version of *DASYLab* - clicking *No, thanks* button closes the window. After installation one need to restart your computer.

4.2 Plug VIBdaq 16.1 card to computer



Note!

The following procedure shall be carried out once before the first use of the VIBdaq 16.1 card

After the restart of computer VIBdaq 16.1 card is ready to be plugged in. To do this, connect an external power adapter to the *Power* socket of VIBdaq 16.1 and 230V socket, then connect one of the USB cables included in the kit to the computer and to the USB1 slot on the rear of the module. USB2 socket should be left unconnected.

**Note!**

Connecting the USB2 instead of USB1 to the PC will change the order of modules' detection of VIBdaq16.1 card, which can cause problems with synchronization and change the order of the inputs.

When you connect the card to the computer, it will detect a new device and then install the appropriate drivers. After a moment, a message that new device was installed appears. Next step is to run the program *InstaCal* to register the module in the system. *InstaCal* program default location is: *Start »All Programs» Measurement Computing »InstaCal*.

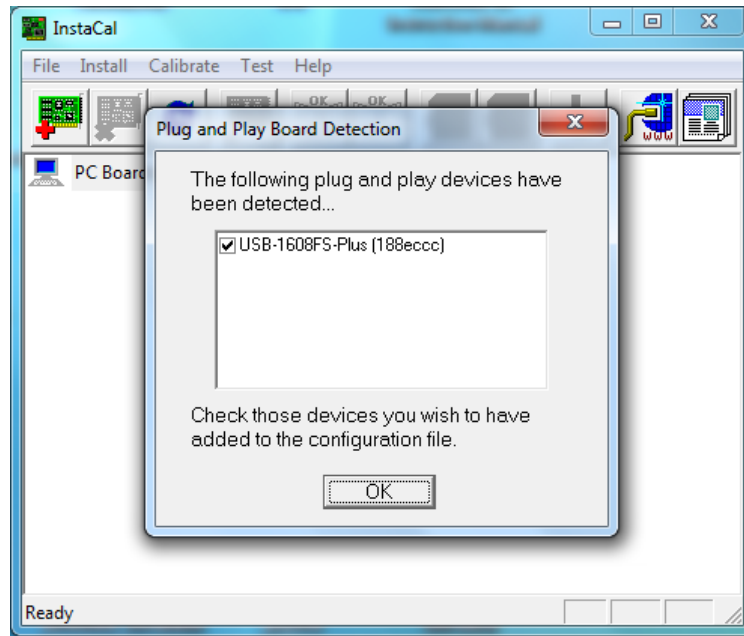


Figure 4.3 » Adding the module in the InstaCal program

Starting *InstaCal* opens its main window, and after a while the computer should inform about finding new Plug and Play devices (Figure 4.3). Keep selected device checked and confirm by *OK* button. The Plug and Play Board Detection window will be closed and the module named *Board#0*, with serial number *188eccc* will be visible in the main window. After adding the first module one should exit *InstaCal*, and then attach the other supplied USB cable to the computer and USB2 slot of VIBdaq 16.1 card.

As in the case of the first module, the computer will find new device and install the appropriate drivers. Start the *InstaCal* program again when new device is installed. The program should search for Plug and Play devices, and as a result find the second module. As in the previous case, the search result should be confirmed by clicking *OK*. The search will locate the second module - subordinate to the first. Figure 4.4 shows a *InstaCal*'s window with the second module (called *Board#1*, Serial No. *1888aea*) installed.

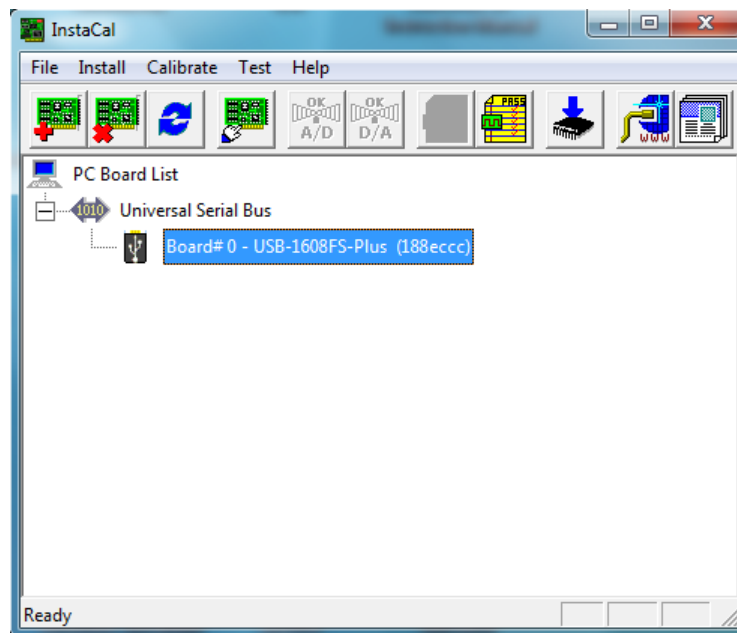


Figure 4.4 » First module of VIBdaq 16.1 card installed in InstaCal program

The final step of installation process is the activation of synchronisation. To do this, select *Board#0* module and then click *configure* (marked by a red frame in Figure 4.5), which will open the *Board Configuration* (figure 7). In this window, one must select the *Enable SYNC output* and confirm by *OK* button, and then exit the *InstaCal* program. When the procedure is finished, VIBdaq16.1 card is ready for operation.



Figure 4.5 » InstaCal window - two modules installed in the system

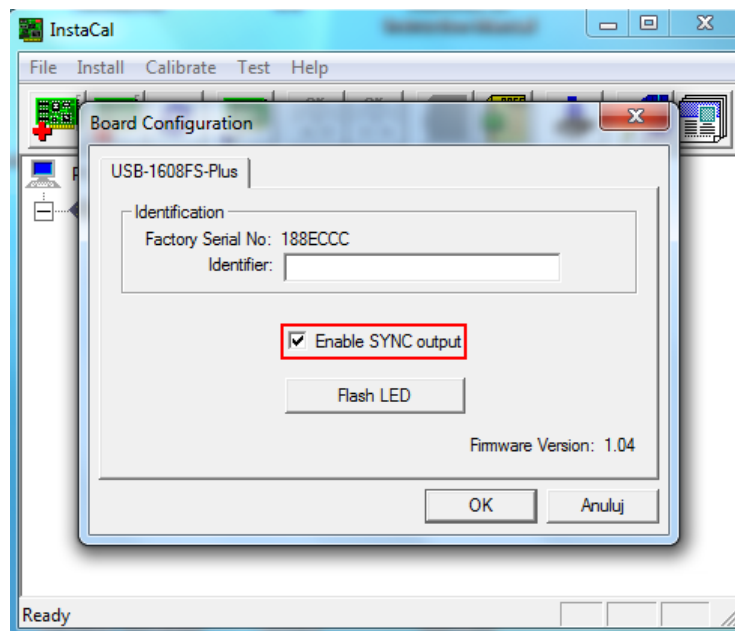


Figure 4.6 » Board configuration window

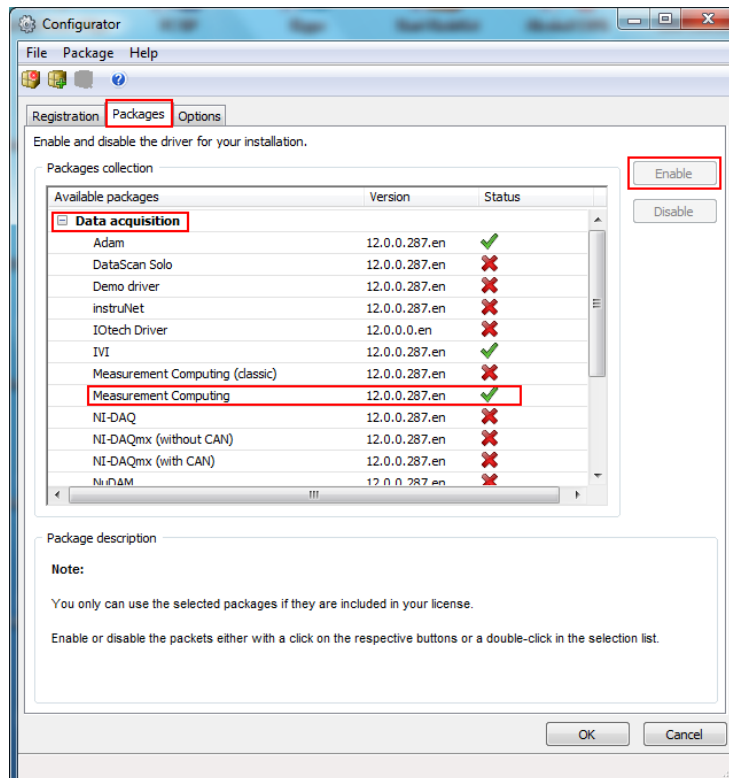
5. Run VIBdaq 16.1 card in DASyLab®

In this section the process of creating a simple project in DASyLab® will be presented step by step. DASyLab is the program used for visual display of the measured signals. Description is prepared on the basis of the program DASyLab® version 12.0. For other versions procedure will be the same, the appearance of windows and the names may be slightly different.

5.1 Install the drivers in the DASyLab®

Before using VIBdaq 16.1 card in the DASyLab® program, make sure that the appropriate drivers are installed in the program. For this purpose it is necessary to run the Configurator 12.0 program. Its shortcut's default location is: *Home »All Programs» DASyLab 12.0» Configurator 12.0*. Figure 8 shows a view of the *Configurator 12.0*.

In the *Packages* tab expand the list of *Data acquisition* and then make sure that Measurement Computing driver is enable. The red cross status means that the driver is inactive. Package can be activated by clicking on the respective button or a double-click in its selection.



After one click *OK*, the configurator's window closes and the driver installer starts automatically unless it was previously installed. Confirm the default installation parameters by clicking the *Next* button in the successively appearing windows. Clicking the *Finish* button completes the driver installation.

Figure 5.1 Configurator 12.0 program's window

5.2 Starting VIBdaq 16.1 card in DASyLab®

Using the VIBdaq 16.1 card in the DASyLab® program is very simple. A simple project used for the presentation of measurement data in the form of graphs in time is presented below.

When one starts DASyLab® - the default location for the shortcut: *Start »All Programs» DASyLab 12.0 »DASyLab 12.0* - the main window appears. It is divided into several areas, of which the most important are: the workspace in which all the components of the project are placed, and the browser window on the left side which is used to search for project elements, such as input modules, arithmetic modules, display modules.

In order to use VIBdaq 16.1 card one has to select the analogue input form the browser window (*Modules »Inputs / Outputs» MCC-DRV »Analog Input* in *Modules* tab (highlighted in red in Figure 5.2) and drag them onto the workspace. Module selection window appears (Figure 5.3), in which you select the desired module.

Module called *Device 1* comprises first eight channels, while module *Device 2* includes a channels No. 9 – 16. In the case where the more than eight channels are used in project, the module *Device 2* needs to selected first. Once the *Device 2* module is added in the workspace, in a similar way, place the module *Device 1*.

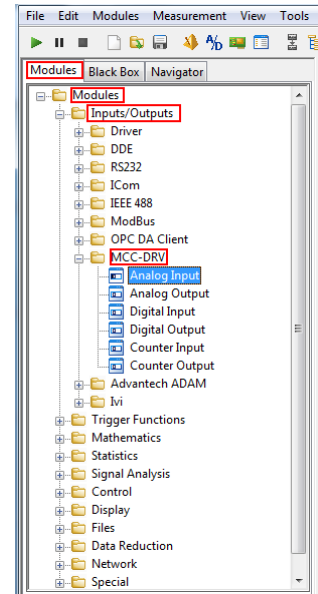


Figure 5.2 » Browser window. Analog input module selected

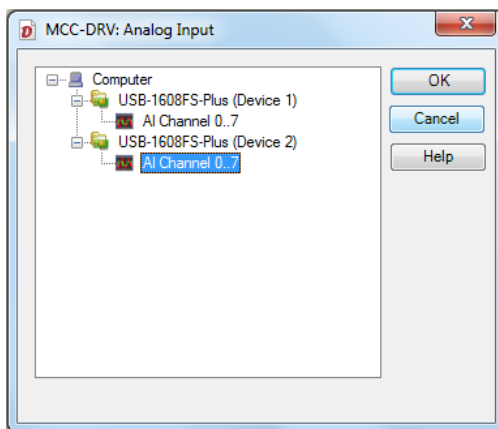


Figure 5.3 » Module selection window



Note!

The foregoing remark concerning the addition of modules is very important; disregarding the specified order prevents synchronization of the two modules.

If one wishes to use in a project only 8 channels or less, it is recommended to use channels within a single module – i.e. the channels 1 to 8 or 9 to 16. The selection of a particular module has no importance in this case. Furthermore, it is recommended to use of the channels of successive numbers, e.g., 1, 2, 3, 4 and 5, instead of 1, 2, 4, 6, 7 if one use the five channels.

After adding the input modules, they should be properly configured. To do this, double-click on the module inputs, window shown in Figure 11 will pop. If the project uses both modules (9 or more channels), the module *Device 2* should be configured first.

Figure 11 needs more attention because of the number of parameters that can be set up. Fields marked with red frames will be discussed in turn below:

- » **Area 1** contains the fields: *Module Name*, allowing the module to be named and *Description*, designed to type a short description.

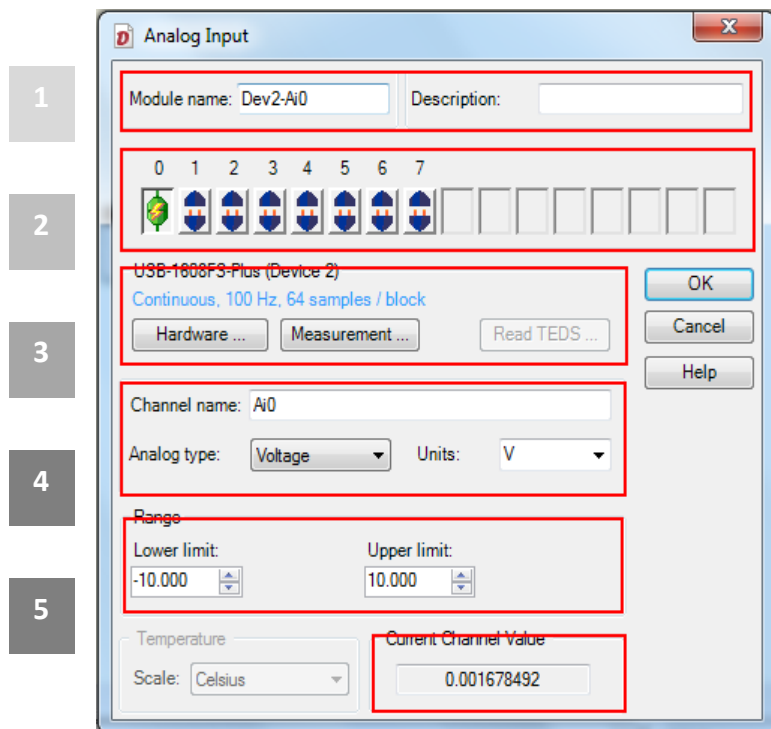





Figure 5.4 » The properties window of input module

- » **Area 2** contains symbols of module's channels which allow one to choose number of active inputs as well as editing the properties of chosen channel. Symbol of two disconnected blue plugs:  symbolizes the inactive channel. By default, each module has one active channel. Double-clicking the left mouse button activates a channel, then the icon changes to a symbol of interconnected plugs in green: , which means that the channel is active and selected for editing - all settings made below will concern this particular channel.

Symbol connected plugs in colour red:  means that the channel is active but not selected. Single left click on such a marked channel to select it - the icon turns green. If necessary, deactivate the channel, double- right-click on its icon, which will change to a symbol of two disconnected plugs in blue.

- » In **Area 3** one can define sampling frequency. *Hardware...* button is used to change the hardware settings. Clicking the *Hardware...* button opens the *Hardware Setup* window shown in figure 12. In this window there are tabs for each module – in figure 12 module's *Device 2* tab is selected. Important parameter called the *Clock source* is located in the *Analog Input tab -> Settings*, which indicates the clock source of module's transducers. If both modules are used, this parameter for the *Device 2* module should be set to *External*. In the case of *Device 1* module *clock source* parameter should be set to *Internal* - this is the default value for this parameter. Similarly, in the case of using only one module, this parameter should be set to *internal*. Clicking the OK button saves the changes.

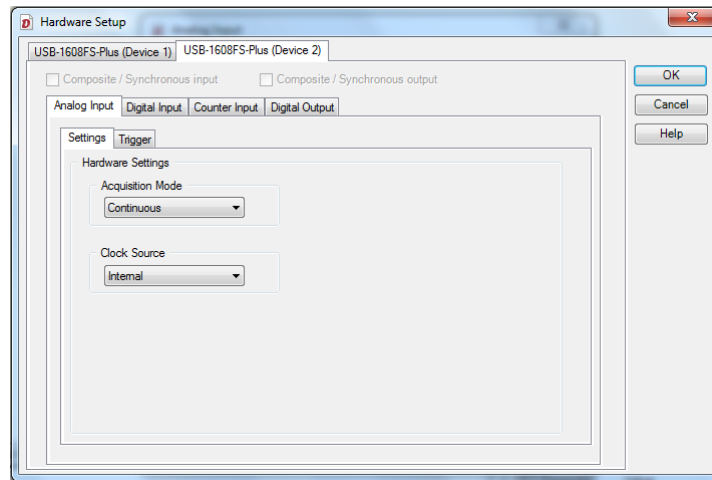


Figure 5.5 » Hardware Setup window

Note!

In case of using both modules in a project the Clock Source parameter must be set to External for Device 2 module. Confirm the change by clicking OK and then it is recommended to re-open the Hardware Setup and make sure the for the Device 1 module option Internal is selected. Failure to do this step will result in lack of synchronization between the modules.

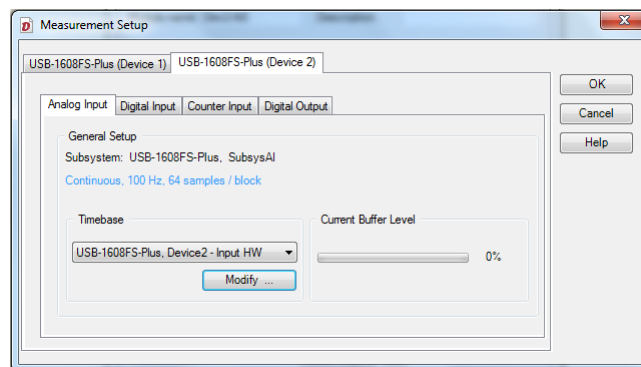


Figure 5.6 » Measurement Setup window

The second of buttons in the area 3: *Measurement...* allows one to change the sampling frequency of the modules. When one click it, *Measurement Setup* window appears (figure 13). In this window, as before, there are tabs for each of the modules. Figure 13 shows tab related with *Device 2* module. In the *Analog Input* tab the currently selected sample frequency and block size are given. If one need to change the sampling frequency click the *Modify...* button which will open the window shown in figure 14. In this window, specify the required sampling frequency and confirm the change by clicking OK.

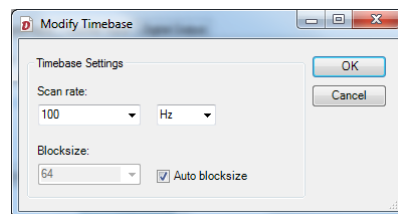


Figure 5.7 » *Modify Timebase* window

When choosing the sampling frequency one should remember that the maximum sampling frequency of each channel is 100 kHz and the sampling frequency of total active channels in the module must not exceed 400 kHz. This means that in the case of using four or fewer channels in a single module, the maximum sampling frequency is 100 kHz and, if used are, for example 8 channels, the sampling frequency can be up to 50 kHz, so that in total does not exceed 400 kHz. Furthermore, using in a single project, both modules one must set equal sampling frequency for each of them.

- » **Area 4** enables one to assign the selected channel (highlighted green plug icon) to the measured value and unit. By default, this is the voltage expressed in volts [V].
- » **Area 5** allows one to select the measurement range of the selected channel. There are ranges of $\pm 10V$, $\pm 5V$, $\pm 2V$ and $\pm 1V$. To select a range, in a field *Lower limit* type minimum value, such as -10, while in the *Upper limit* corresponding maximum value, e.g. 10. Program automatically rejects entered incorrect value, such as -3, 3 or -4.2.
- » In **Area 6** current channel voltage value is displayed.

The parameters contained in boxes 4 - 6 refer to one channel which is currently selected for editing (highlighted green plug icon). Sampling frequency and other parameters in a field 3 apply to the entire module.

When all of desired values are entered and confirmed by OK button, the module is ready for operation. Further signal processing depends on the needs of a particular application. One of the simplest methods of visualization in the DASyLab is to display a timeline. The corresponding block is located in the *Modules »Display» Y/t Chart*.

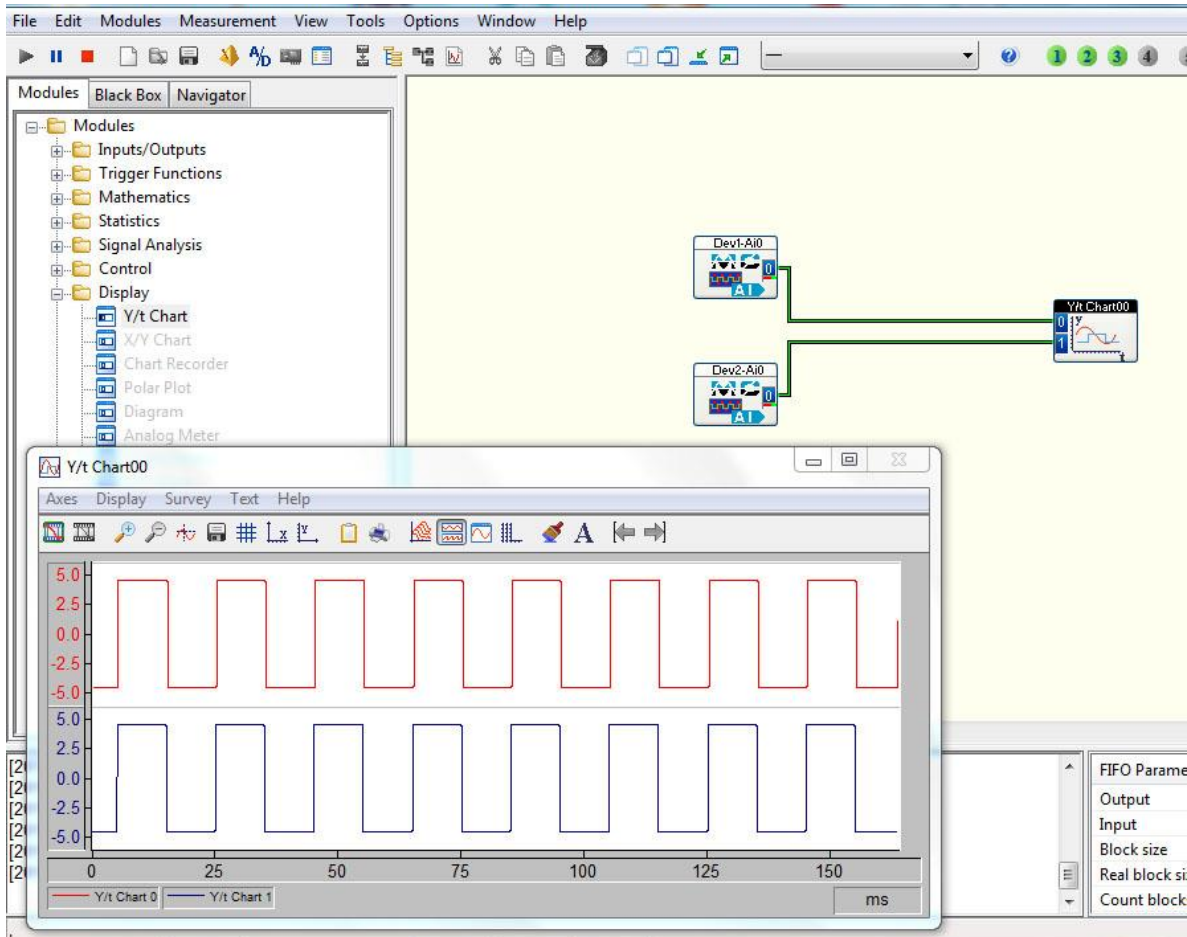


Figure 5.8 » Timeline chart



EC Systems Sp. z o.o.

Lublanska 34
31-476 Krakow
POLAND

Phone: +48 12 627 77 80
Sales: +48 12 627 77 23
Fax: +48 12 627 77 81
e-mail: info@ec-systems.pl